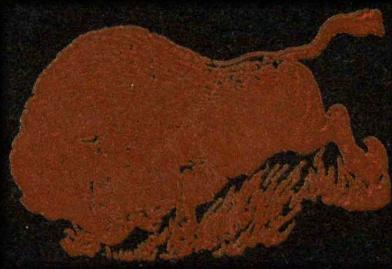


The Buffalo

1935



3 1881 0009 8134 6

OFFICE REF LD3311.A47  
M5627  
Milligan College  
Buffalo  
Milligan College.

OFFICE  
REF

## Foreword



*This book has been compiled with the hope in mind that the students will keep it and cherish it; that it will bring back to them fond memories of their happy days as students of Milligan College. We take this opportunity to thank those whose cooperation and support have made possible this volume.*

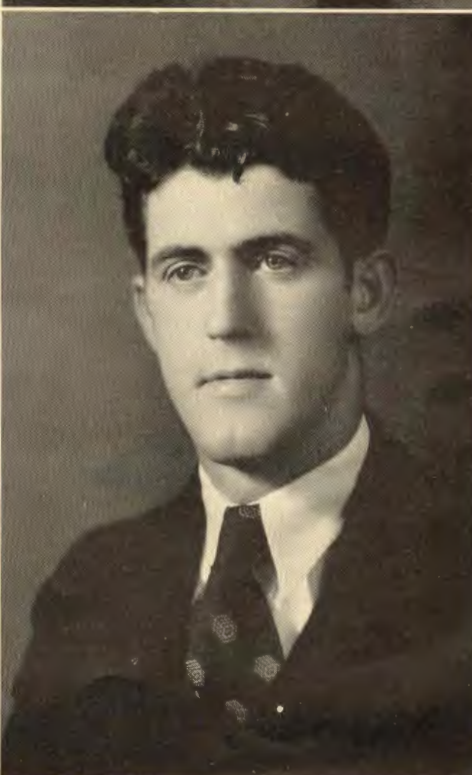
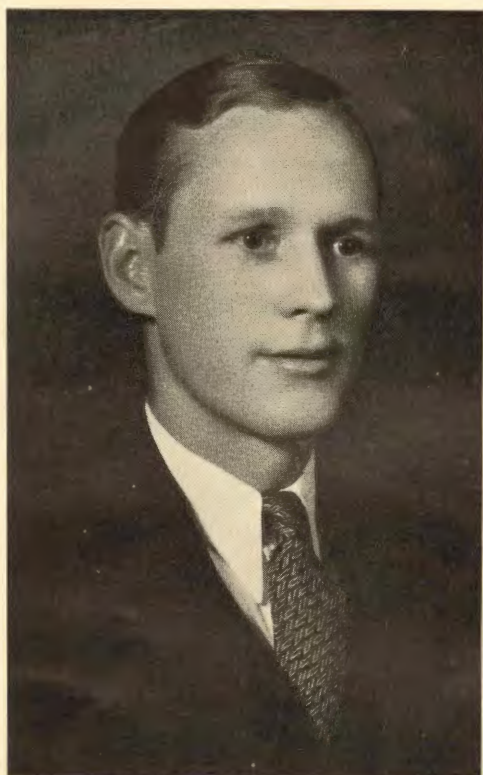
STARLING WOODS, *Editor-in-chief.*

PERCY GRANT, *Business Manager*

P. H. WELSHIMER MEMORIAL LIBRARY  
MILLIGAN COLLEGE  
MILLIGAN COLLEGE, TENN. 37682  
77390



MILLIGAN COLLEGE FACULTY



PERCY GRANT

Basketball 1, 2, 3, 4; All-conference 2, 3;  
Captain 3, 4; Christian Endeavor Presi-  
dent.

NELLIE COX

Forensic Council 1, 2, 3, 4; Debated 1, 2, 3;  
Vice President Council 2; "M" Club 3, 4;  
Manager B. B. Team 3, 4; Glee Club 2, 3;  
Dramatic Club 2, 3, 4.

GARNET WILLIAMS

Basketball 1, 2, 3, 4; "M" Club 4; Dramatic  
Club; Masque; Volunteer Band; Secretary  
Senior Class; Forensic Council; Swim-  
ming Examiner.

STARLING WOODS

Football 1, 2, 3, 4 and Captain 4; "M" Club  
2, 3, 4; President Pre-Med. Club 3; Secre-  
tary and Treasurer "M" Club 4; Dra-  
matic Club; Vice President Junior Class.



CAMERON DUGGINS

Football 1, 2, 3, 4; "M" Club 2, 3, 4; Vice President "M" Club 4; Dramatic Club.

IVA CRABTREE

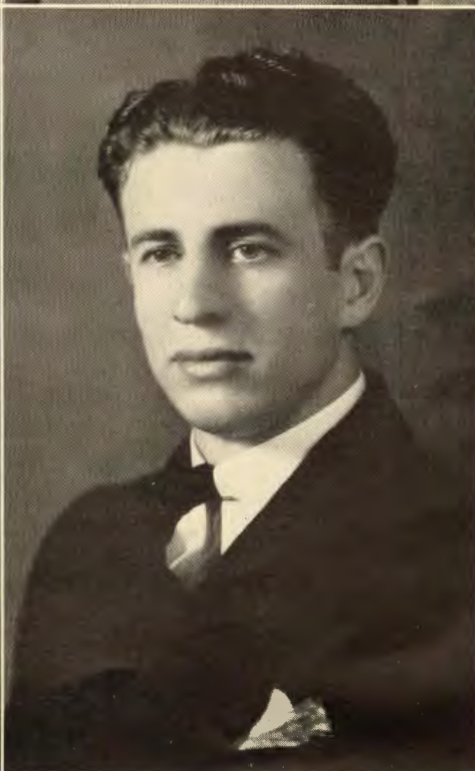
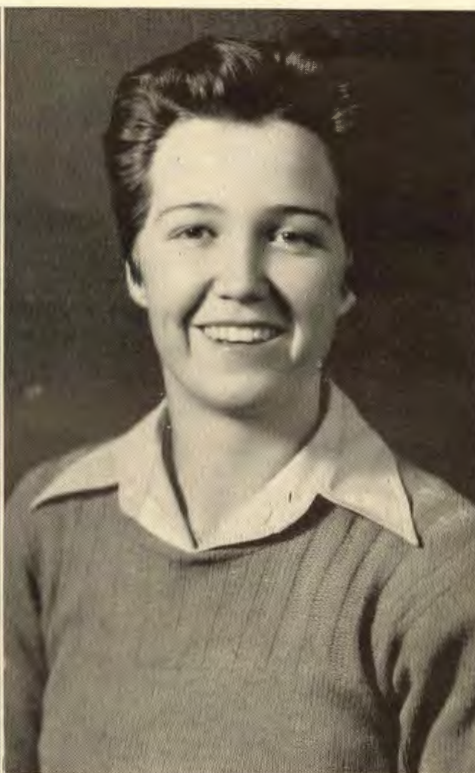
Home Economics Club; Dramatic Club 2, 3, 4; Basketball 1, 2, 3, 4; "M" Club 2, 3, 4; President Girls "M" Club 4.

DOROTHY NEISER

Ministerial Association 1, 2, 3, 4; Volunteer Band 1, 2, 3, 4; President Volunteer Band 2, 3, 4; Glee Club 1, 2, 3, 4; Dramatic Club 2, 3, 4; Music Club 1, 2, 3, 4; Christian Endeavor 1, 2, 3, 4; Home Economics Club 1.

BOGGESS CULVAHOUSE

Football 1, 2, 3, 4; Basketball 1, 2, 3, 4; "M" Club 1, 2, 3, 4; Pres. "M" Club 3.



**KYLE CROSS**

Football 1, 2, 3, 4; "M" Club 4; Sec'y-Treas.  
"M" Club 4; Athenian Literary Society;  
Purchasing Agent College.

**NELL HITT**

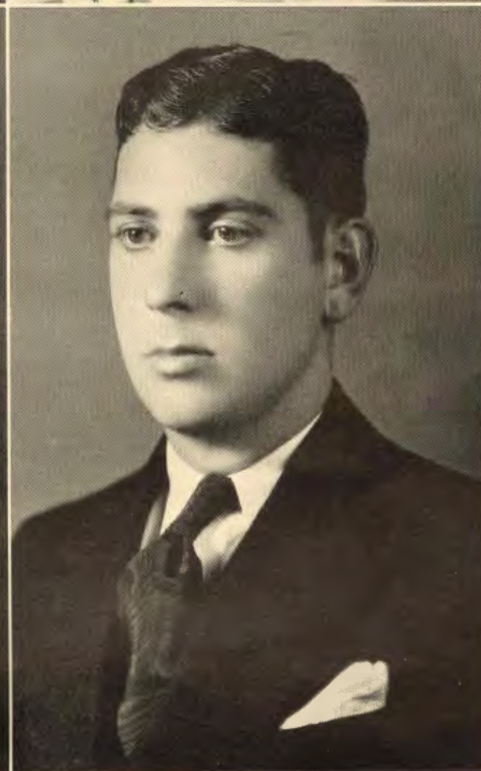
President S. S. Class 4; Sec'y and Treas. 4;  
Voted Prettiest Girl 4; Dramatic Club 3,  
4; Senior Life Saving 4.

**RUTH WALKER**

President Junior Class; Capt. Girls B. B. 4;  
Vice President Glee Club 1, 2, 3, 4; Var-  
sity Debating Team 3, 4; Member Mas-  
que; Dramatic Club.

**MILBERT BIBLE**

Football 2, 3, 4; "M" Club 2, 3, 4; Secre-  
tary 4; Pre-Law Club 1, 2, 3; Secretary,  
Vice President 3; Dramatic Club 1, 2, 3,  
4; Pres. of Senior Class 4; Stampede Staff  
4; President of Bible Class 4; Glee Club 2;  
Smoky Mt. Conference Tackle 4.



LUKE GAFFIN

Football 1, 2, 3, 4; "M" Club 2, 3, 4; Dramatic Club; Masque; Track Team; Glee Club.

CARL STEPHENS

Football 1, 2, 3, 4; Alternate Captain and Captain 3; Alternate Captain 4; "M" Club 2, 3, 4, President 4; All-Conference Quarterback 4; Pre-Law 2, 3, President 3; Honor Student 1, 2, 3, 4; Vice President of Class 4.

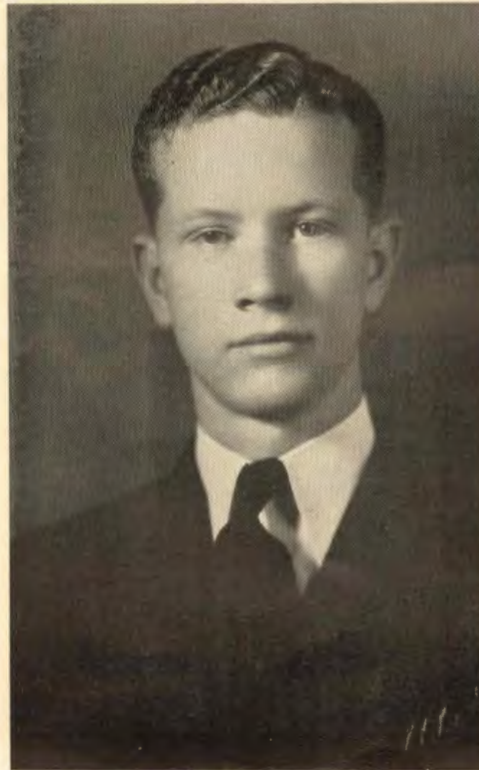
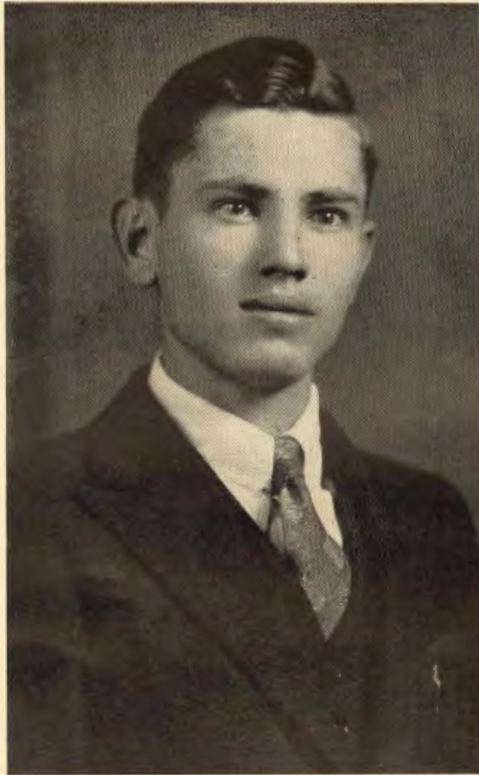
YETIVA VARNER

Dramatic Club 31, 32; Masque 33; President of Masque 34; News Editor Stampede; Glee Club.

CECIL JAMES

Glee Club; Dramatic Club; Volunteer Band; Vice President Christian Endeavor.





RAYMOND PHILLIPS

Dramatic Club; Ministerial Association.

MARY ADAMSON

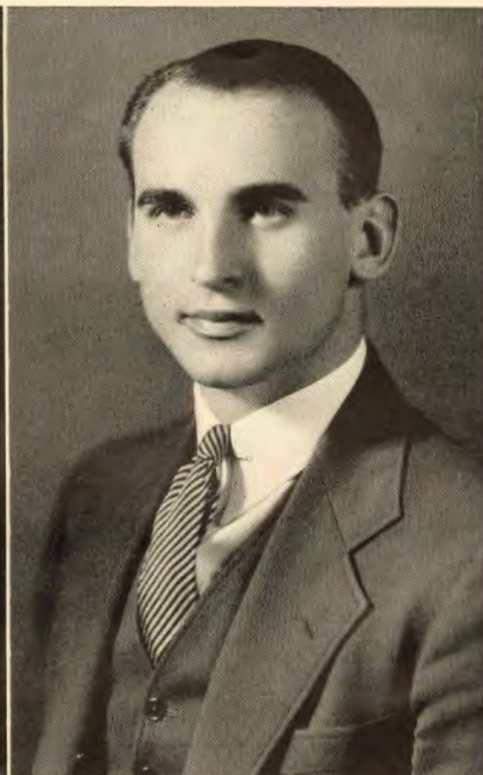
Glee Club 1, 2, 3.

CARLYLE BURDETTE

Pre-Law Club 2, 3, 4; Dramatic Club 2, 3, 4; Forensic Council 4.

JAMES PETERSON

Day Student; Transferred from Teachers College; Pre-Law Club.



RUBY CRAWFORD

Music Club 1, 2; Ossolion Literary Society 1; Typist for Stampede 1, 2; Glee Club 3, 4; Christian Endeavor Pianist 4.

MARVIN LOWE

Editor "Stampede" 4; Forensic Council 4.

MERVIN McCLOSKY

Football 3, 4; Vice President "M" Club; Vice President of Masque.

ANDREW MANTOOTH

Advertising Manager "Stampede".

PICTURES NOT IN ANNUAL

KAY BURNETTE

MARY ALICE KNOWLTON

SADIE LACY



JUNIOR CLASS  
SOPHOMORE CLASS



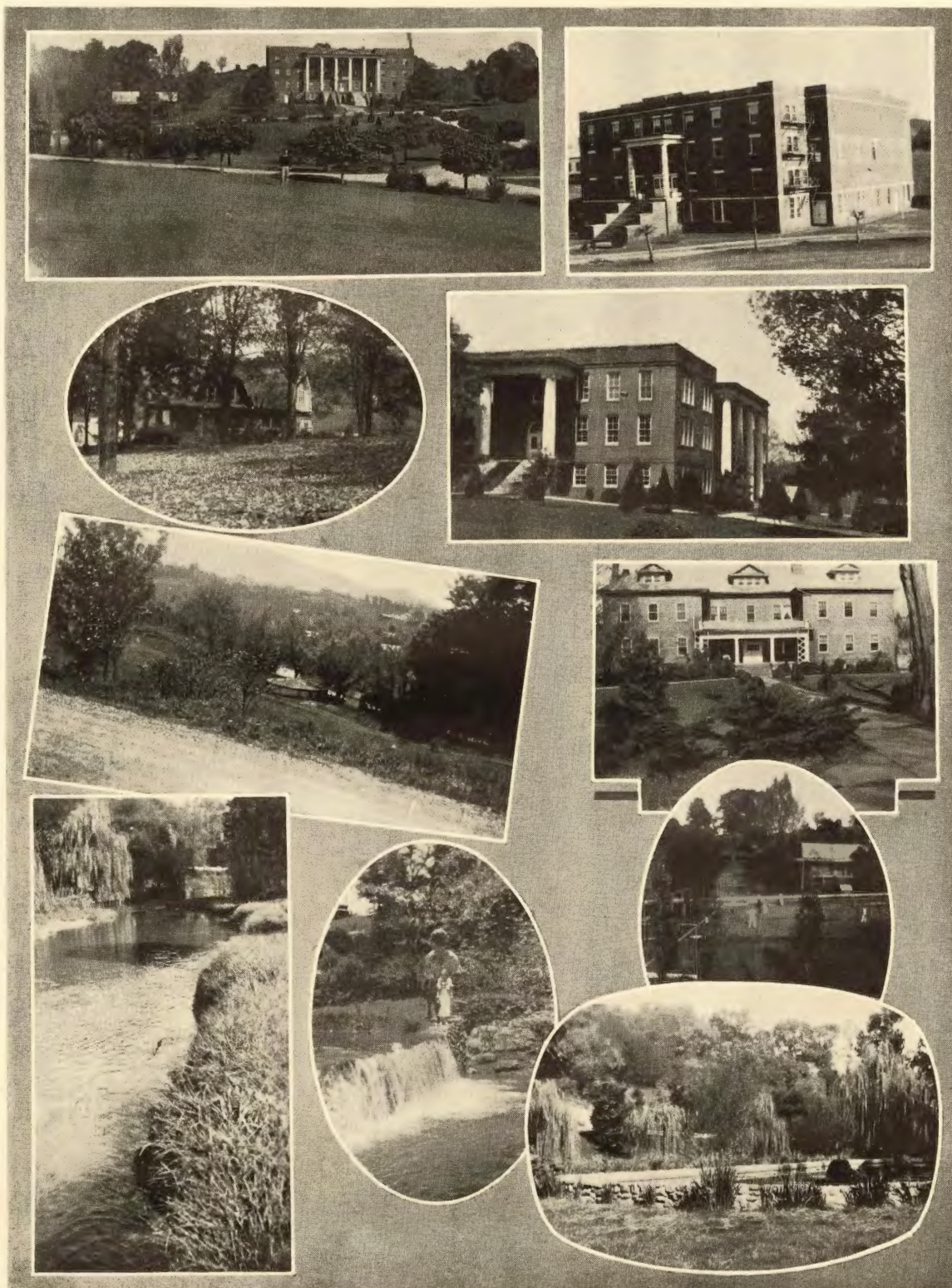
FRESHMAN CLASS  
DRAMATIC CLUB



GLEE CLUB  
FORENSIC COUNCIL



VOLUNTEER BAND AND MINISTERIAL ASSOCIATION  
PRE-MED CLUB



CAMPUS SCENES



CAMPUS SCENES





CAMPUS COUPLES



FOOTBALL TEAM  
Smoky Mountain Conference Champions



BASKETBALL TEAMS



MILLIGAN COLLEGE "M" CLUBS



THE CHARLIE CARGILLE  
STUDIO

*Made The  
Pictures of  
This Book*

PEOPLES TRANSFER CO.

*"Johnson City's Oldest Movers"*  
A. E. FORMAN, *Manager*

Cook with GAS

*--The Ideal Fuel*

Clean, fast, any  
heat desired instantly.  
Economical.

77390  
P. H. WELSHIMER MEMORIAL LIBRARY  
MILLIGAN COLLEGE  
MILLIGAN COLLEGE, TENN 37682

Washington County Gas Co.

JOHNSON CITY

ELIZABETHTON

PARKS-BELK CO.

|||  
THE HOME OF  
BETTER VALUES

|||  
JOHNSON CITY, TENNESSEE

<p>REFRIGERATE AND COOK ELECTRICALLY <i>for</i> ECONOMY</p>		<p>HANNAH'S SMARTLY STYLED CLOTHES <i>For Young Men and Men Who Stay Young</i></p>	
<p>WOFFORD BROS., Inc. <i>General Insurance</i> JOHNSON CITY, TENNESSEE  H. M. BURLESON, President F. H. WOFFORD, Vice-President W. M. HARRIS, Sec'y-Treas.</p>		<p><i>Compliments of</i> RED BAND <i>Kitchen-Tested</i> FLOUR</p>	
<p>LANE'S GROCERY Fresh Meats and Groceries Fruits and Vegetables 104 Tipton St. Johnson City PHONE 140</p>	<p>Compliments of Johnson City Steam Laundry JOHNSON CITY, TENN.</p>	Roy Jones	Tipton Hatcher
<p>Mrs. White At The College Store KNOWS THE BEST She Uses SOUTHERN MAID ICE CREAM</p>	<p>New Cabs Courteous Drivers Checker Cab Co. Heated Cabs Better Cabs Cheaper Rates Phone 800 T. M. Milligan, Manager</p>	<p>Majestic Barber Shop Haircuts, 25c Floyd Wilhoit Primus Dees</p>	
<p>THE TALK OF THE TOWN <b>SAM'S</b> Samuel E. Miller HOLE IN THE WALL SHOP Johnson City, Tennessee HATS - SHIRTS - TIES - HOSE Underwear - Pajamas - Belts - Handker- chiefs - Suspenders - Etc.</p>	<p>Moneyhun-Patrick Co. PAY CASH GROCERS Commerce Street JOHNSON CITY, - - - TENN.</p>	<p>"The Thinking Fellow Rides a Yellow" Yellow Cab Company Phone 5252 H. T. SMITHDEAL, Manager</p>	
<p><i>Compliments of</i> THE PET DAIRY PRODUCTS COMPANY</p>		<p><i>Compliments of</i> THE DARLING SHOPPE</p>	

